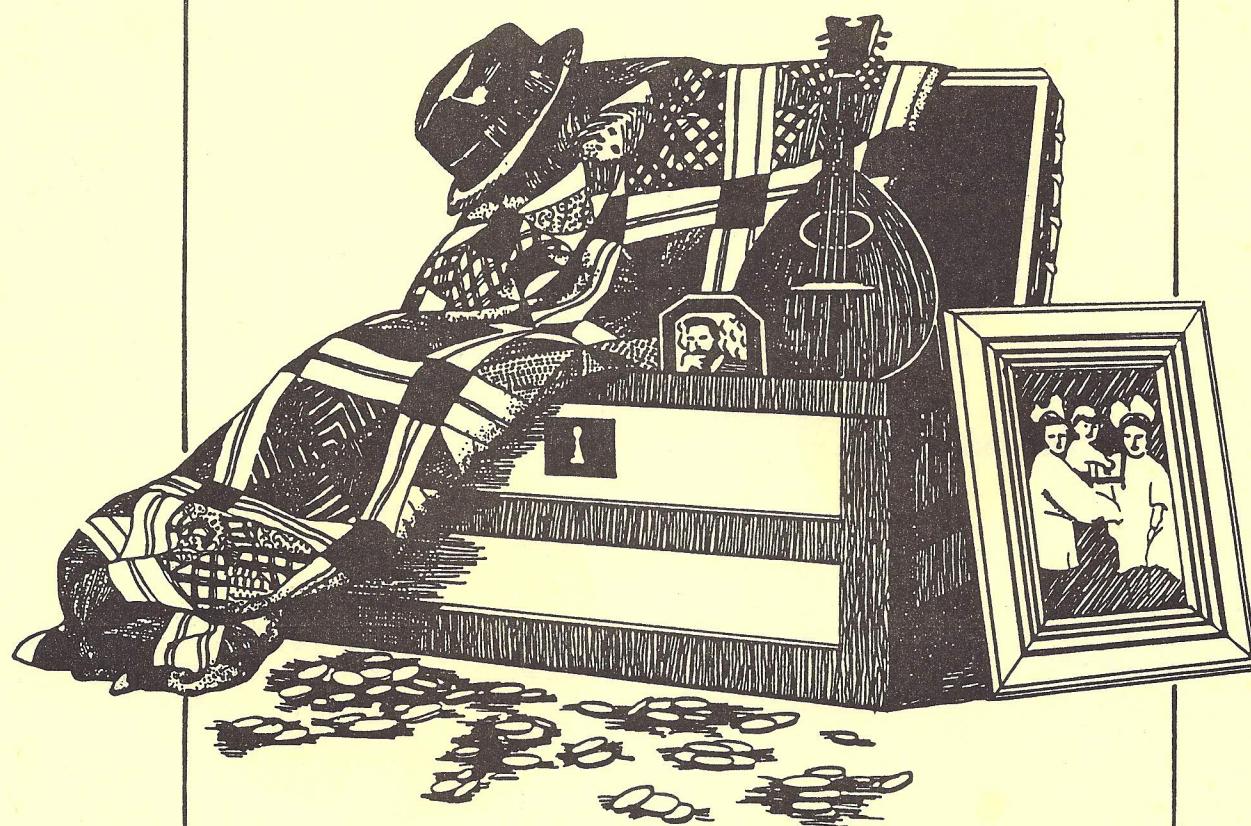


Buried Treasures



Volume XXII, No. 4
October 1990

CENTRAL FLORIDA GENEALOGICAL
AND HISTORICAL SOCIETY, INC.

CENTRAL FLORIDA GENEALOGICAL AND HISTORICAL SOCIETY, INC.

P. O. Box 177
Orlando, Florida 32802

OFFICERS

President	Charlotte E. RAND	407-273-4567
Vice President	Ann E. OSISEK	407-645-1440
Recording Secretary	Revy DALTON	407-293-4457
Corresponding Secretary	George LITTRELL	407-679-2095
Treasurer	Margret A. BRINSFIELD	407-321-6691
Historian/Archivist	Rhoda W. ROLLIN	407-339-4302
Counselor	Ralyne E. WESTENHOFER	407-351-9282
Members at Large	Glen W. LAMB	407-859-8086
	Claire E. MILLER	407-898-0256
	Ray SHEWFELT	407-671-9803

COMMITTEE CHAIRMEN

Publications - Charlotte E. RAND	Seminar/Workshop - Ann E. OSISEK
Education - Clifton O. DUTY	Computer Support - Claire E. MILLER
Membership - Wendell E. FISH	By-Laws - Rhoda W. ROLLIN
Chaplain - Elma G. BISHOP	Hospitality - James & Margaret McMULLEN
Forms - Elyzabeth H. HEMPHILL	Brochures/Fliers - William WEINGARTNER
	Nominations - Tanya C. MILLER
Cemetery / Courthouse Records (no Chairman at present)	

PUBLICATIONS COMMITTEE

BT = Buried Treasures / TCN = Treasure Chest News

BT Editor	Publications Chairman	TCN Editors
	Charlotte E. RAND	Alma H. HOLT
BT Indexes	Editor Emeritus	Ann E. OSISEK
Claire E. MILLER	Ralyne E. WESTENHOFER	TCN Abstractors
BT Indexing (1969-1986)	Typists	Christine W. DUDDING
Helen P. WILKINS	Margret A. BRINSFIELD	Rhoda W. ROLLIN
Book Reviewers	Jean Andrews FISH	Surname Index
Anne Hammond CONNELL	William E. MCCRACKEN	Wendell E. FISH
Christine W. DUDDING	Claire E. MILLER	Collating/Distribution
Tanya C. MILLER	Mary L. Buell TODD	Publications Committee
Family Finder	Proofreading	Mailing Agent
Computer Support Group	Beth BUNTIN	Helen P. WILKINS

All of the volunteer Publications Committee members listed above support each other, where needed, in the various staff positions. The Committee meets monthly at the Orlando Public Library.

Permission is granted to quote or reprint any article or other material, either in whole or in part, provided credit is given to **BURIED TREASURES** (including author, volume and date citation).

The **Central Florida Genealogical and Historical Society, Inc.** disclaims responsibility for statements, whether in fact or of opinion, made by contributors.

BURIED TREASURES cover was designed (1989) by Gina Simmons **HERBERT**.

